



MONTHLY MEMBERSHIP PROGRESS REPORT

District 2 S5

Results as of: 06/30/2018

GMT: JOE AL PICONE

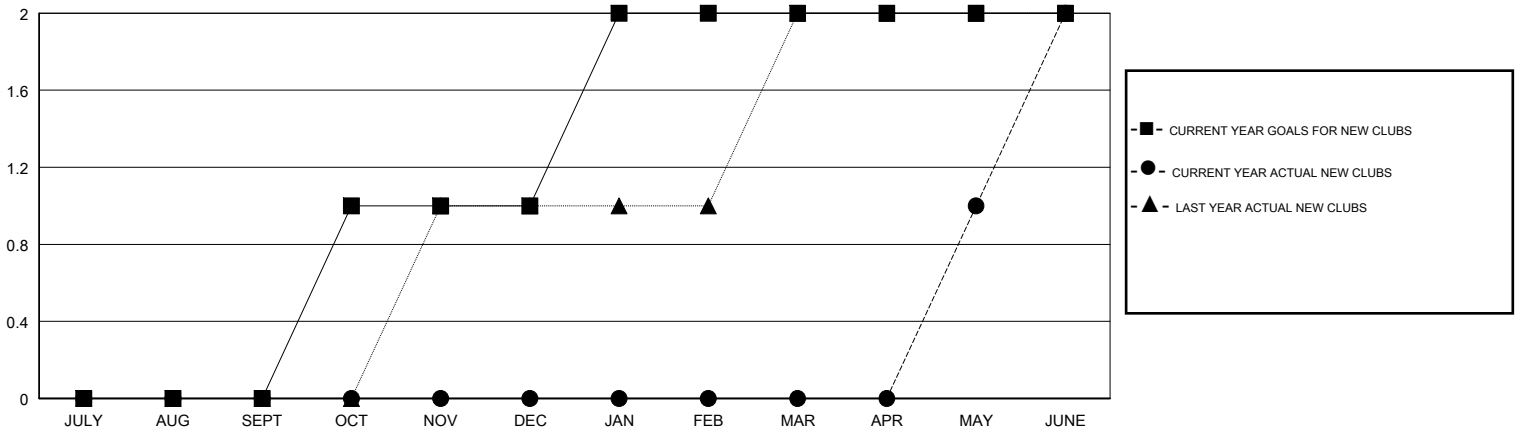
LOCATION TEXAS

GMT CA

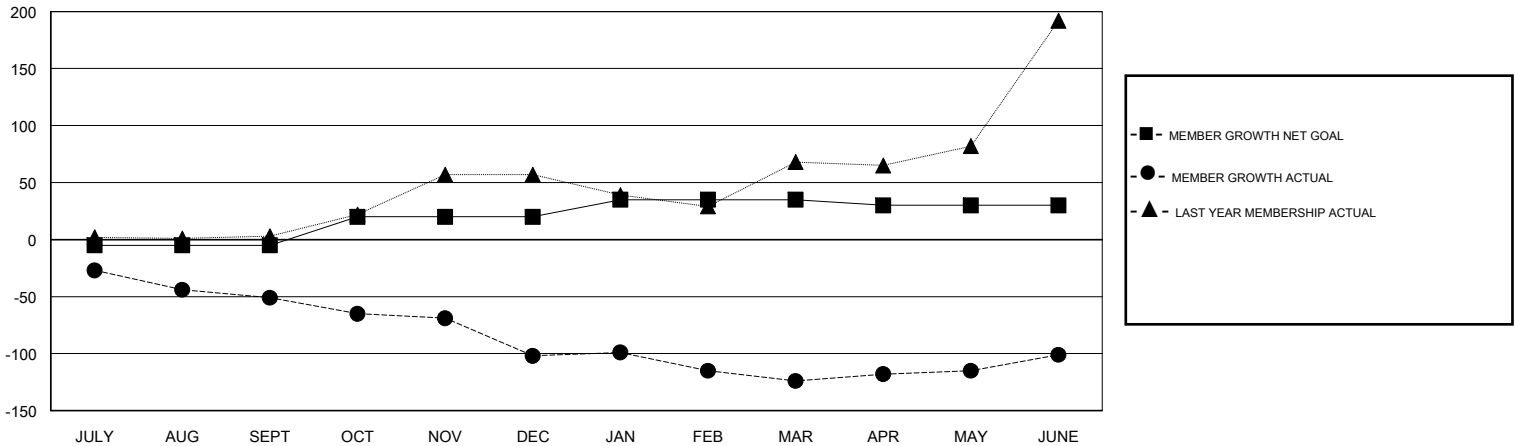
Clubs			
RESULTS FOR 2017-2018			
QUARTER	NEW CLUB GOAL	NEW CLUBS	DROPPED CLUBS
JULY/AUG/SEPT	0	0	0
OCT/NOV/DEC	1	0	1
JAN/FEB/MAR	1	0	0
APR/MAY/JUNE	0	2	1

Members			
RESULTS FOR 2017-2018			
QUARTER	MEMBER GROWTH NET GOAL	MEMBER GROWTH ACTUAL	DROPPED MEMBERS ACTUAL (including transfers)
JULY/AUG/SEPT	-5	43	90
OCT/NOV/DEC	25	65	112
JAN/FEB/MAR	15	77	95
APR/MAY/JUNE	-5	159	132

GOALS AND ACTUAL NEW CLUBS CUMULATIVE



GOALS AND ACTUAL MEMBERS CUMULATIVE



DROPPED CLUBS: 2

45 CLUBS OF 63 ADDED 1 OR MORE NEW MEMBERS

GENDER DISTRIBUTION

MALE 1,495 (62.66%)
 FEMALE 891 (37.34%)
 Women Percentage Fiscal Year Goal: 20%

DROPPED MEMBERS

[CLICK HERE FOR CUMULATIVE MEMBERSHIP DATA](#)

DECEASED	28
CLUB CANCELLED	26
OTHER	375
TOTAL	429

TOTAL FAMILY UNIT MEMBERS	0
FAMILY MEMBERS PAYING HALF DUES	0